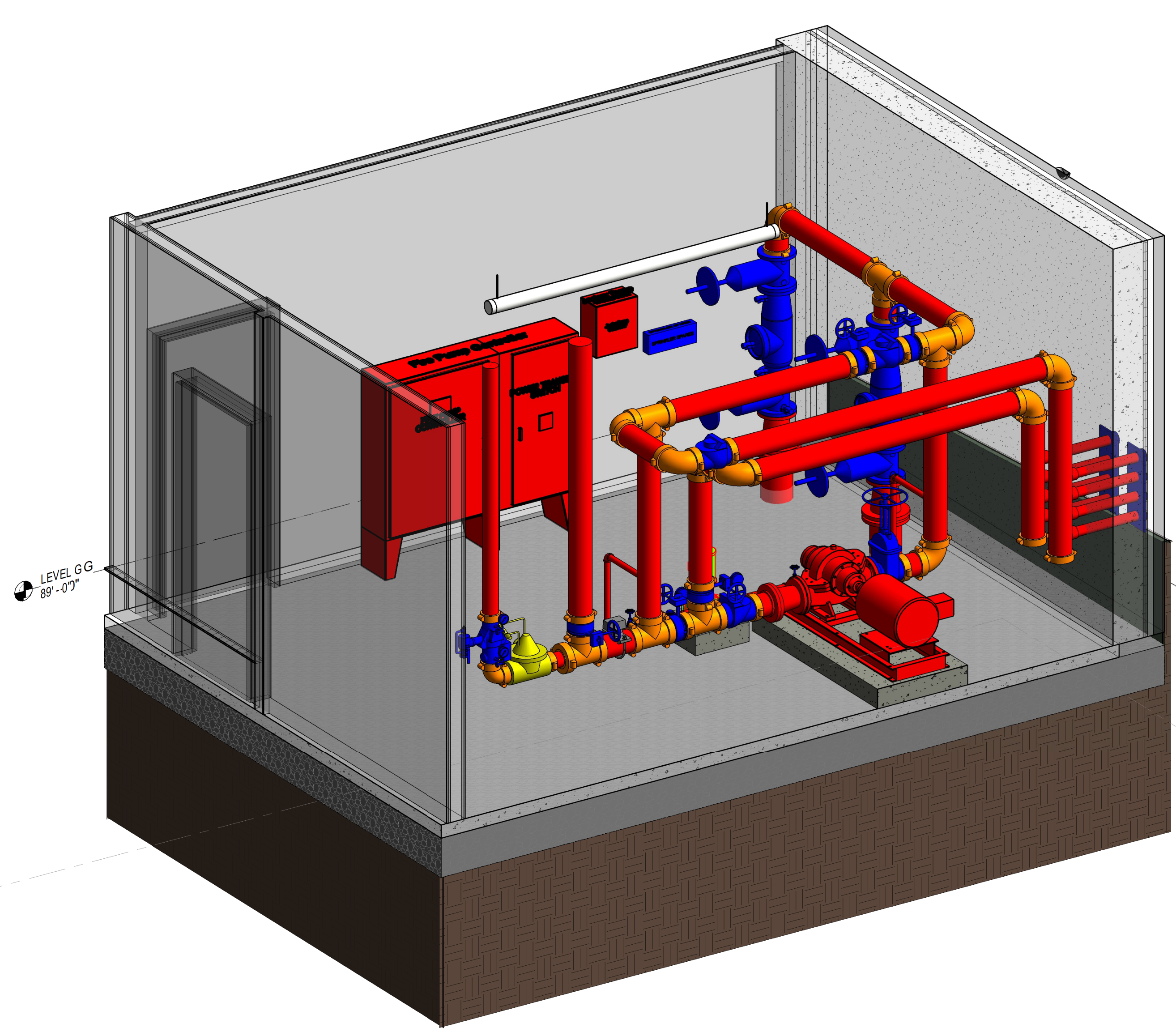
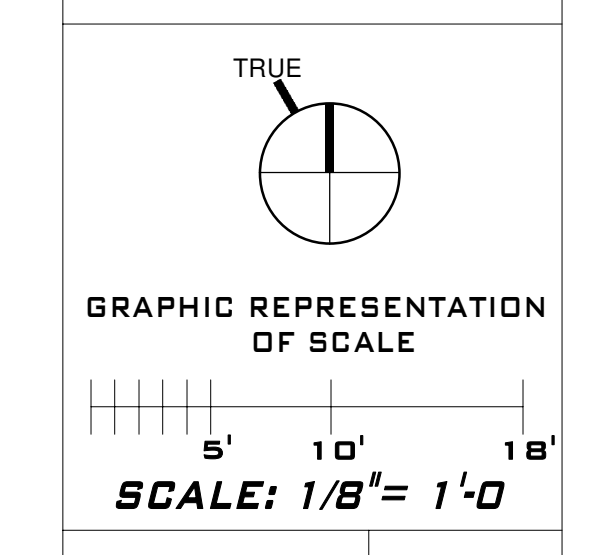
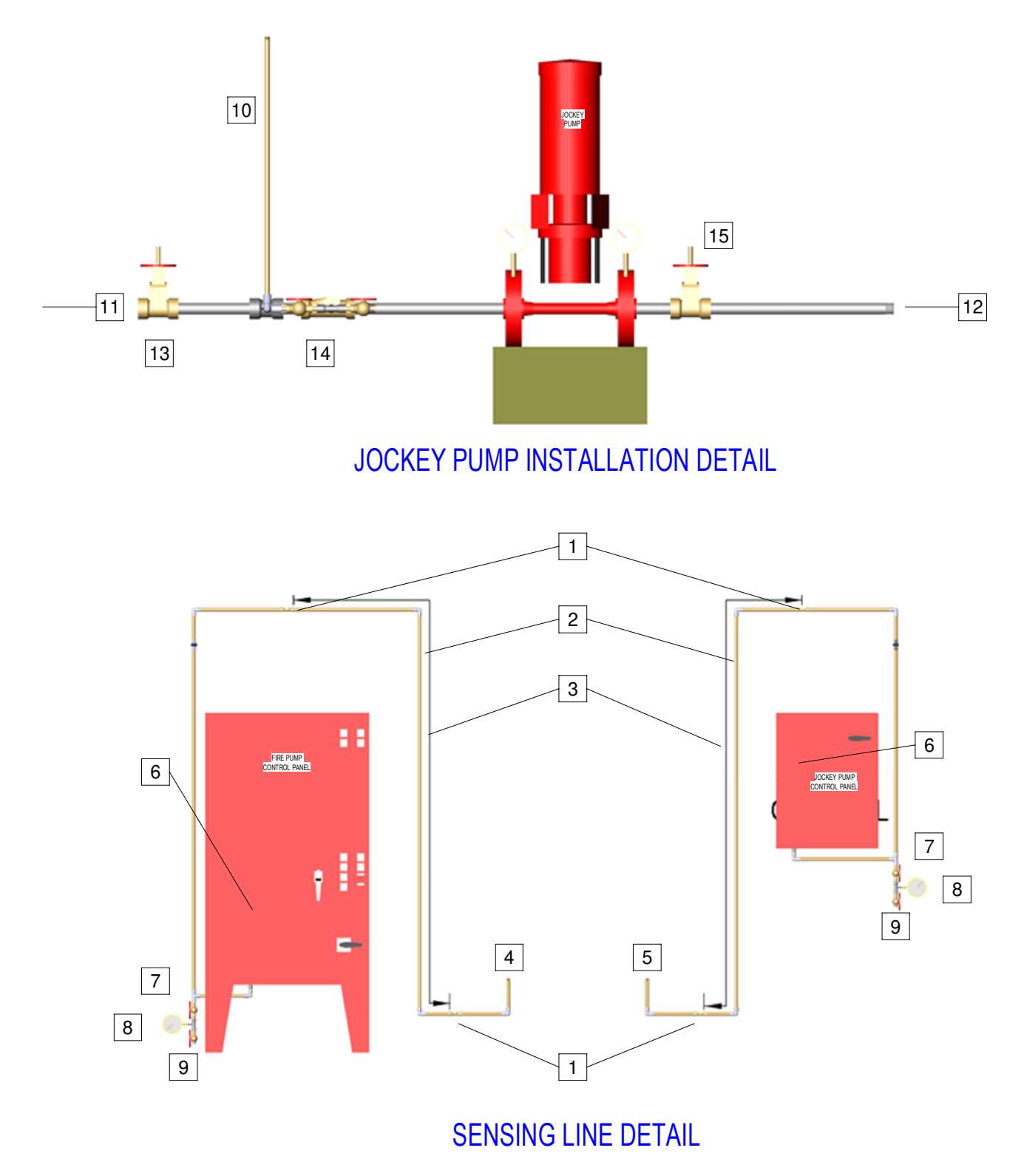
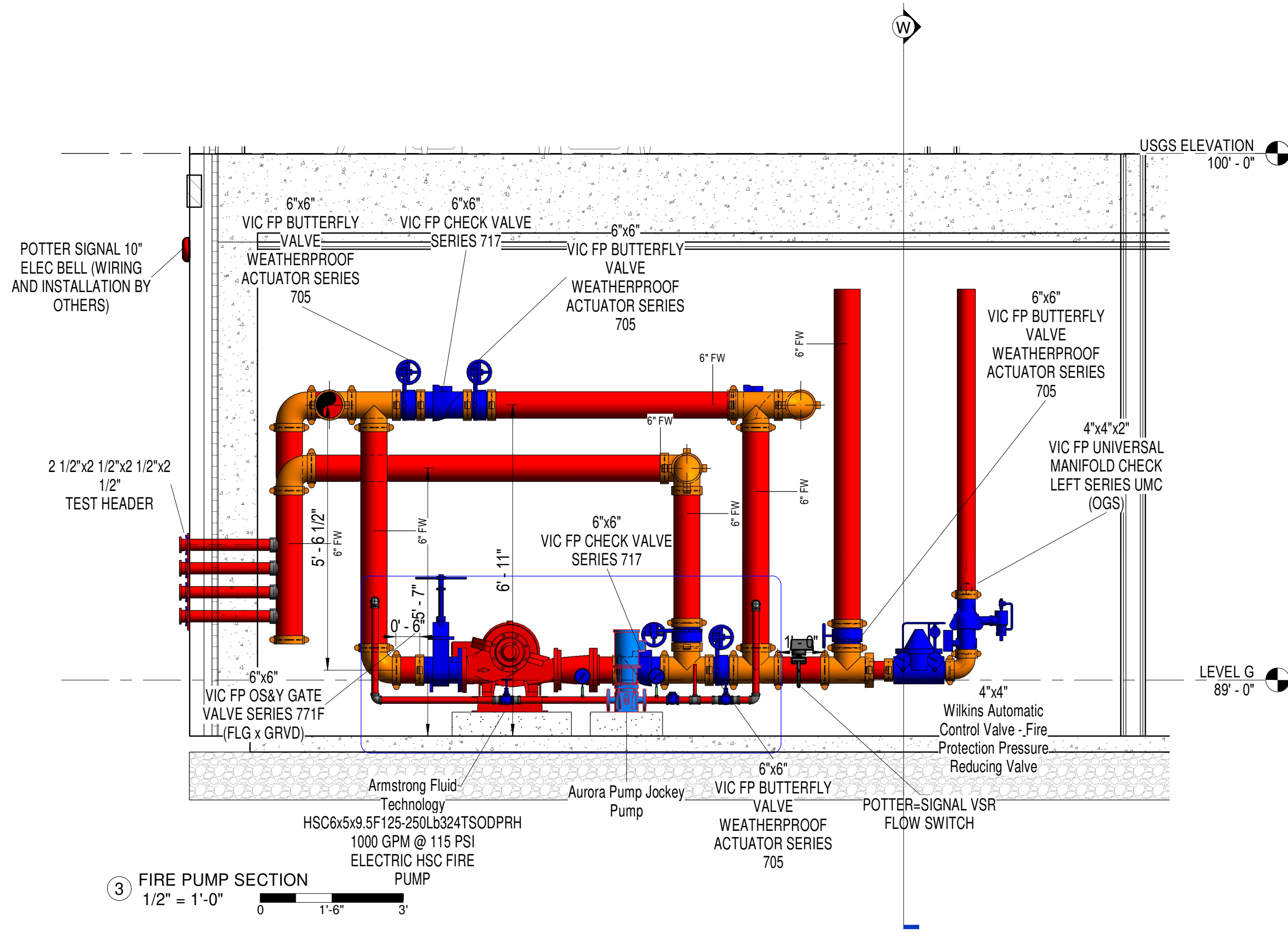


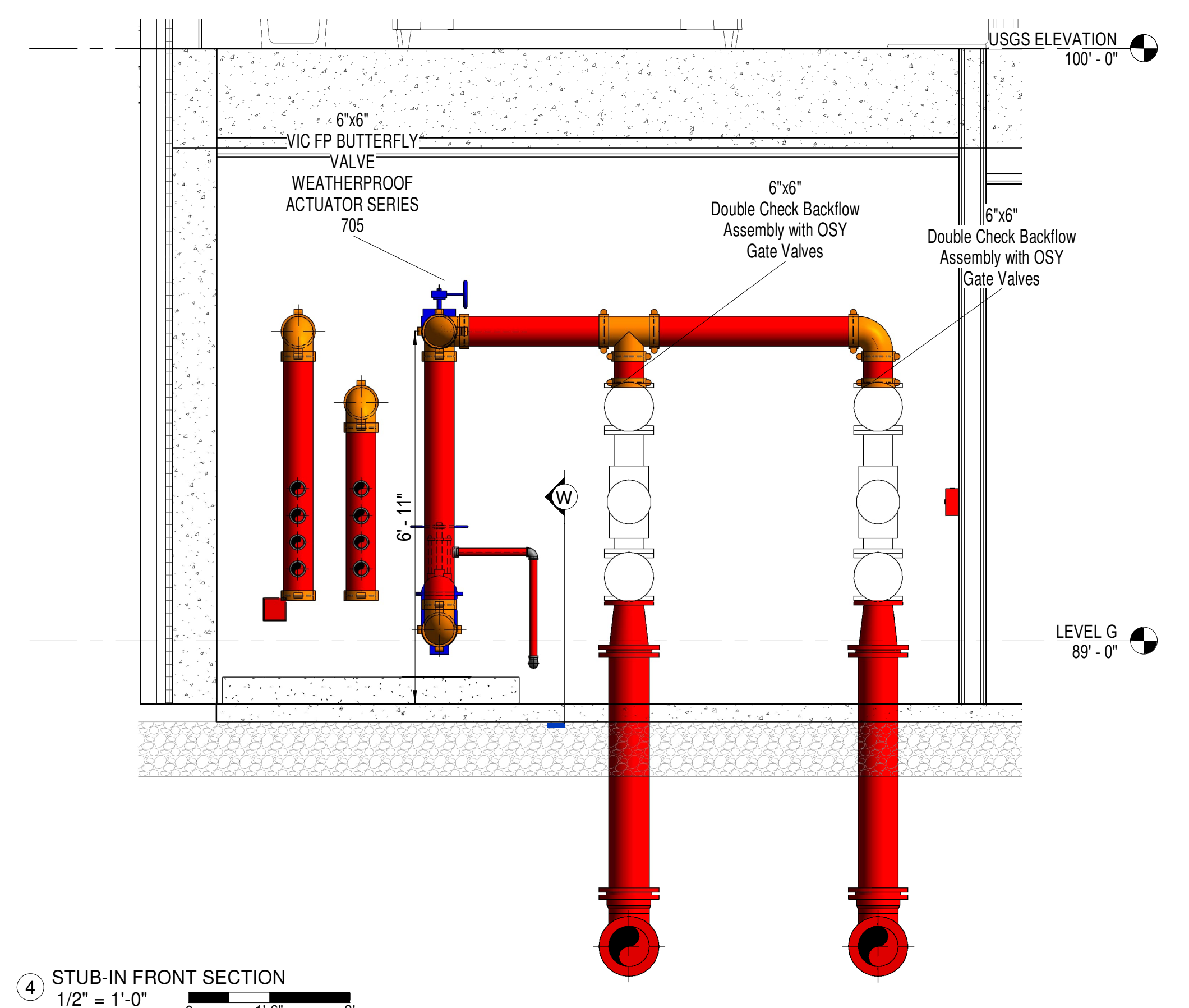
PROJECT	
# OF LEVELS:	7
1ST FLOOR	120,838 SF
2ND FLOOR	121,191 SF
3RD FLOOR	87,704 SF
4TH FLOOR	87,561 SF
5TH FLOOR	82,361 SF
6TH FLOOR	82,361 SF
7TH FLOOR	81,633 SF
TOTAL AREA:	663,649 SF
NFPA 13 2019 EDITION	PARKING GARAGE S-2
OCCUPANCY:	RESIDENTIAL R-2
OCCUPANCY:	CONSTRUCTION TYPE: LEVELS 12-1, A-PT LEVELS 3-7 III-A



2 3D FIRE PUMP ROOM

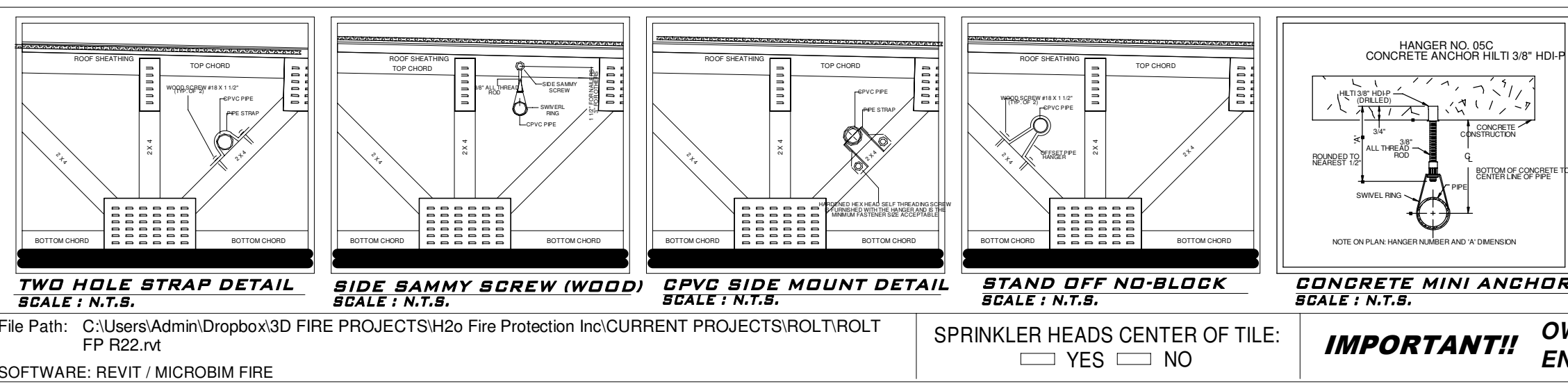
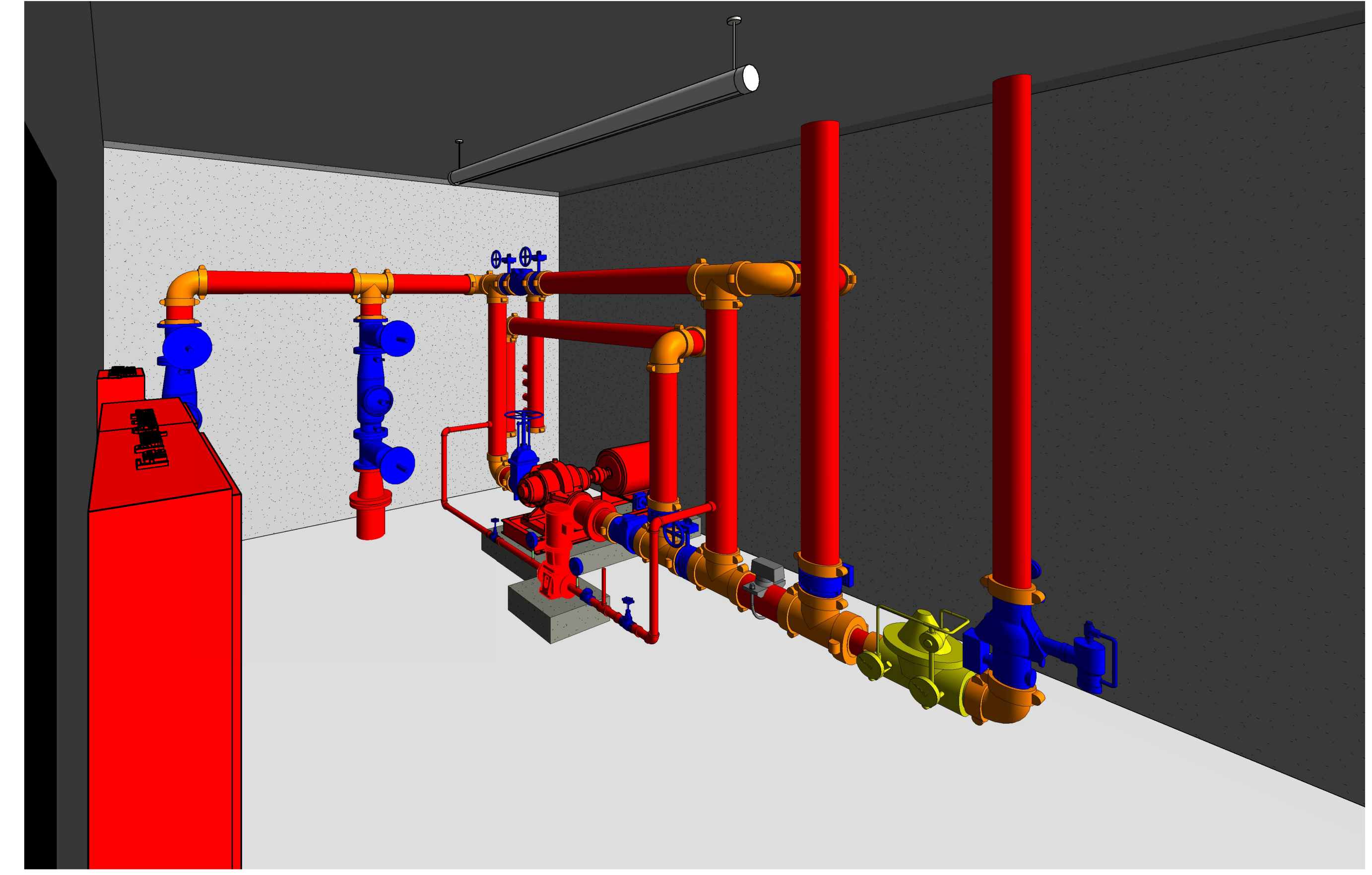
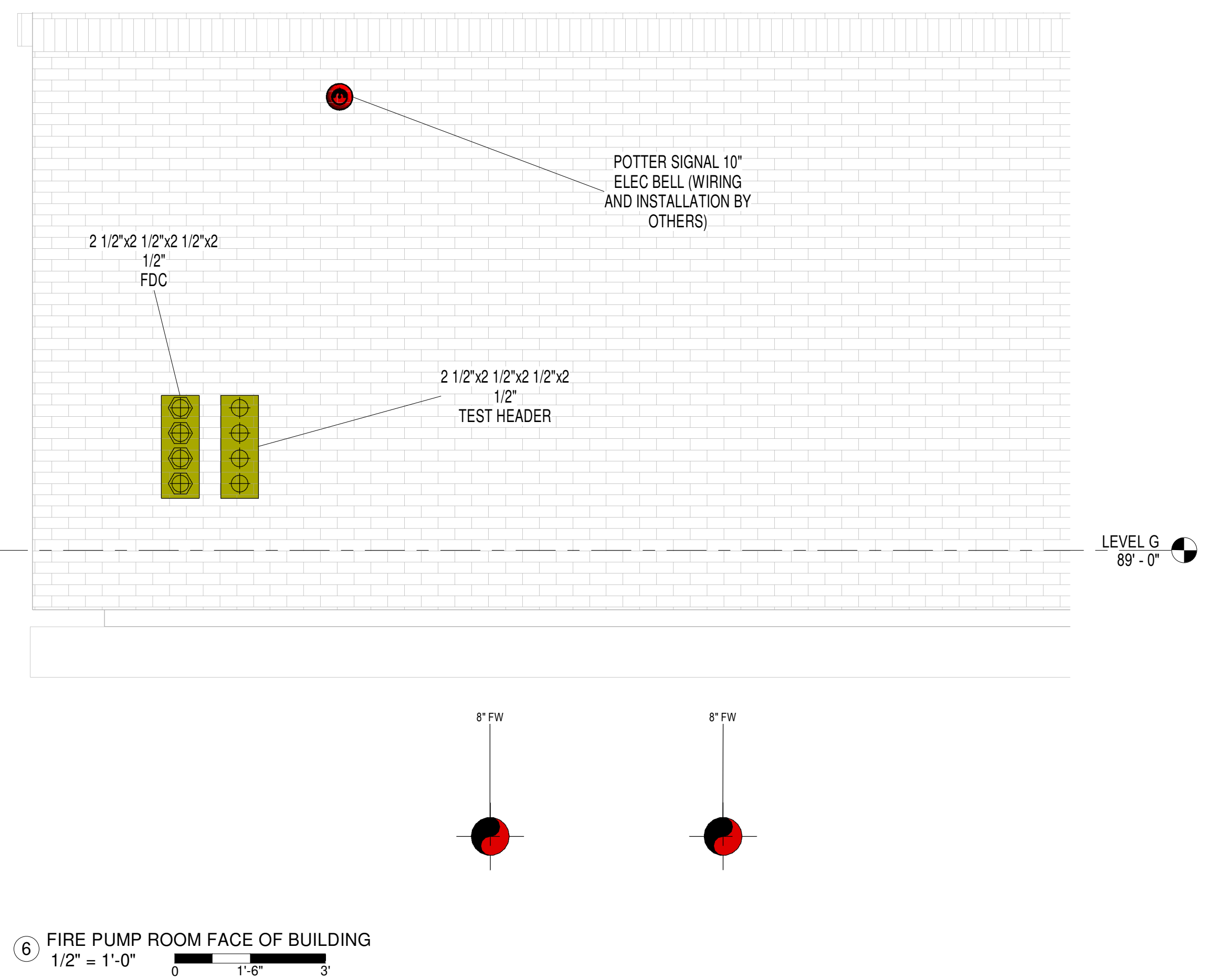
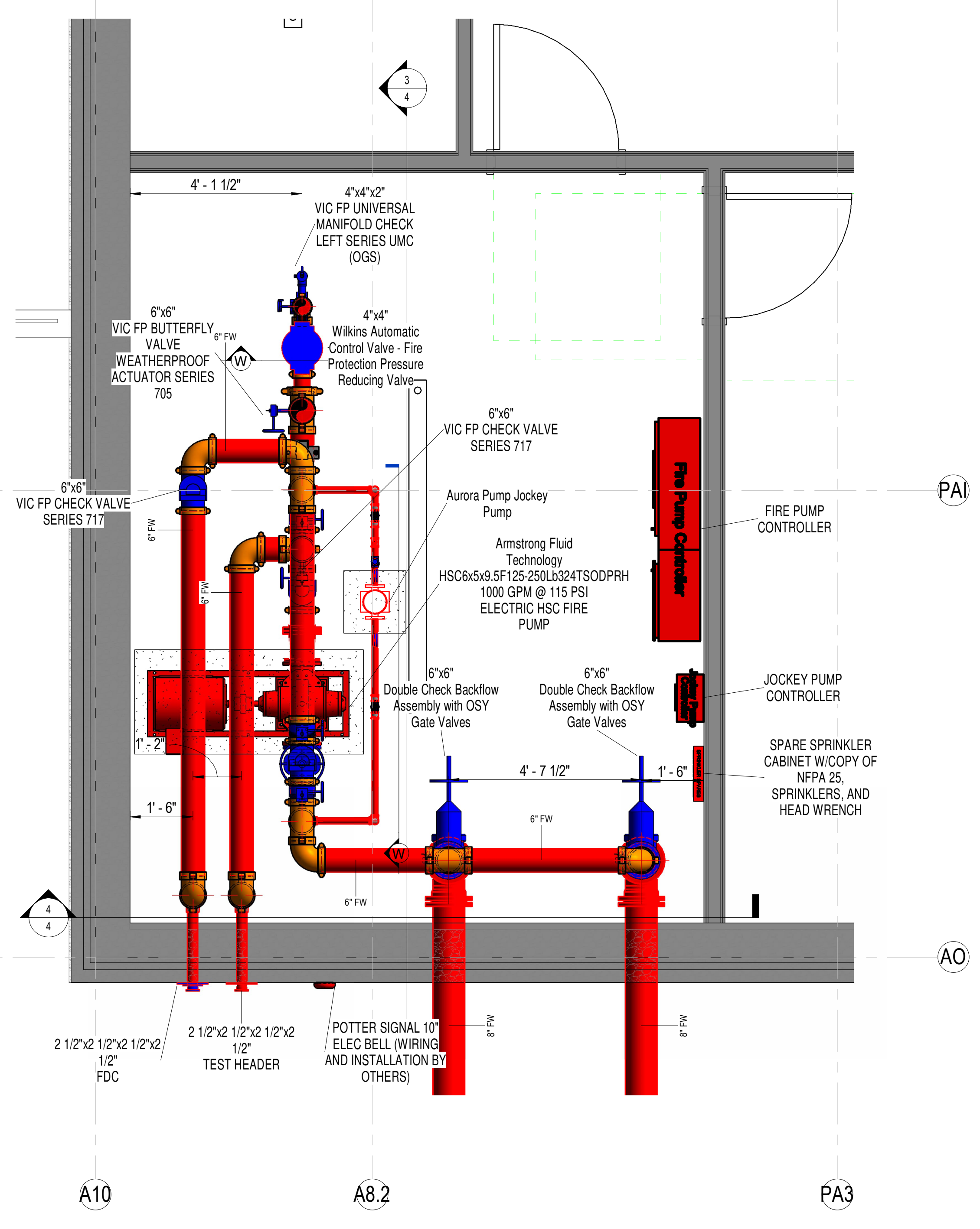


JOCKEY PUMP / SENSING LINE NOTES	
NUMBER	TEXT
1	1/2" BRASS SWING CHECK VALVE OR UNION WITH 3/32" HOLE IN CLAPPER
2	MINIMUM OF 5' OF PIPING
3	1/2" COPPER PIPING AND FITTINGS
4	1/2" TO FIRE PUMP
5	1/2" TO JOCKEY PUMP
6	PRESSURE SWITCH
7	1/2" GLOBE VALVE
8	1/4" PRESSURE GAUGE
9	1/2" GLOBE VALVE WITH 1/2" PLUG
10	1/2" COPPER PIPING TO JOCKEY PUMP CONTROLLER
11	1-1/4" DISCHARGE
12	1-1/4" SUCTION
13	1" OS&Y VALVE
14	1" MILWAUKEE BUTTERFLY VALVE
15	1" CHECK VALVE



Fire Pump Room / Housing per NFPA 20 (BY OTHERS)

- 4.14.1.4 Equipment Access.
 - 4.14.2.1 The location of and access to the fire pump room(s) shall be pre-planned with the fire department.
 - 4.14.2.1.1 The location of and access to the fire pump room(s) shall be pre-planned with the fire department.
 - 4.14.2.1.1.1 Fire pump units supplying only local application fire protection systems shall be accessible by a path that is not subject to exposure from a fire in any hazard protected by the fire pump.
 - 4.14.2.1.2 The portions of the building needed for the access, as required by 4.14.2.1.1, shall have a fire resistance rating not less than the fire resistance rating of the fire pump room.
- 4.14.3 Heat
 - 4.13.3.1 An approved or listed source of heat shall be provided for maintaining the temperature of a pump room or pump house, where required, above 40°F (4°C).
 - 4.13.3.2 The requirements of 11.6.5 shall be followed for higher temperature requirements for internal combustion engines.
- 4.14.4 Normal Lighting
 - Artificial light shall be provided in a pump room or pump house.
- 4.13.5 Emergency Lighting
 - 4.14.5.1 Pump rooms shall be provided with emergency lighting.
 - 4.14.5.2 The intensity of illumination in the pump room(s) shall be 3.0 ft-candles (32.3 lux), unless otherwise specified by a requirement recognized by the authority having jurisdiction.
 - 4.14.5.3 Emergency lights shall not be connected to an engine-starting battery.
 - 4.14.5.4 The emergency lighting shall be capable of maintaining the lighting level for a minimum of 2 hours.
- 4.14.6 Ventilation
 - Provision shall be made for ventilation of a pump room or pump house.
- 4.14.7 Drainage
 - 4.14.7.1 Floors shall be pitched for adequate drainage of escaping water away from critical equipment such as the pump, driver, controller, and so forth.
 - 4.14.7.2 The pump room or pump house shall be provided with a floor drain that will discharge to a free-flow location.
- 4.14.8 Guards, Couplings and flexible connecting shafts shall be installed with a coupling guard in accordance with Section 7 of ANSI B11.19, Performance Requirements for Safeguarding.



PIPE MATERIAL:

LINES: DYNALFLOW OR EQUAL
 SCH. 10 SCH. 40 CPVC

MAINS: DYNATHREAD DYNALFLOW OR EQUAL
 SCH. 10 SCH. 40
 DYNALFLOW CPVC

TYPE: IMPORT DOMESTIC FOREIGN

PIPE LENGTHS SHOWN:
 CUT (STEEL) CENTER-CENTER (CPVC)

PIPE END PREP:
 (STEEL: GROOVED // CPVC: SLIP)

SYMBOL LEGEND:

STANDARD SYMBOLS	STANDARD SYMBOLS	STANDARD SYMBOLS
# - HYDRAULIC NODE POINT	⊕ - GLOBE UMC RISER	⊖ - RESIDENTIAL PENDENT
• - FIRE DEPT. CONNECTION	⊕ - BUTTERFLY VALVE	⊖ - EXTENDED COVERAGE PENDENT
— - CPVC FP PIPING	⊕ - CHECK VALVE	⊖ - UPRIGHT
— - STEEL FP PIPING	⊕ - OS&Y VALVE	⊖ - SEMI-RECESSED PENDENT
— - UNDERGROUND PIPING	⊕ - BACKFLOW PREVENTER	⊖ - CONCEALED PENDENT
		⊖ - DRY PENDENT
		⊖ - HORIZONTAL SIDEWALL
		⊖ - VERTICAL SIDEWALL

FLOW TEST:

STATIC PRESSURE: 68.2 P.S.I.
 RESIDUAL PRESSURE: 48 P.S.I. WATER FLOW: 1,500 G.P.M.
 FLOW TEST WITH 10% REDUCTION:
 STATIC PRESSURE: 61.38 P.S.I.
 RESIDUAL PRESSURE: 60.92 P.S.I.
 WATER FLOW: 1,500 G.P.M.

STANDPIPE CALC. (THROUGH FDC)
 REQUIRED PRESSURE: 175 PSI
 TOTAL DEMAND: 1,000 GPM
 A SIGN WILL BE PROVIDED AT FDC THAT READS:
 "MANUAL WET STANDPIPE
 100 PSI TOP OUTLET PRESSURE
 FDC DEMAND 1,000 GPM AT 158 PSI"

STAMP

DRAWING INFORMATION
 SCALE: As Indicated
 DRAWN BY: Gerald W. Ebeling
 DATE: 4/27/2023 6:51:37 PM
 JOB NUMBER: 2315
 STATE LICENSE NUMBER: 15054
 REVISION DESCRIPTION

NOTE: ALL ELECTRICAL WIRING TO BE DONE BY OTHERS. (N.I.C.)